

Expanding Open Data Through Community Supported Dashboards

Open Data Week

Washington State Dept. of Children, Youth & Families (DCYF)
Data Governance: Warren Wessling & Anneliese Irby

<https://www.dcyf.wa.gov/practice/oiaa/reports>



Washington State Department of
CHILDREN, YOUTH & FAMILIES

Introduction to DCYF

Established in 2018 with DSHS-Children's Administration and Dept of Early Learning, then DSHS-Juvenile Rehabilitation joined in 2019.

Our Values:

Inclusion

Respect

Integrity

Compassion

Transparency

Focus: We are the lead state agency for child welfare, early learning (birth to 5-years), and juvenile rehabilitation with a keen focus on partnership and prevention services to reduce entries into the system and provide additional supports for exits from the system.

Vision: to ensure that "Washington state's children and youth grow up safe and healthy—thriving physically, emotionally and academically, nurtured by family and community."

- Relentless focus on child outcomes
- **Commitment to collaboration and transparency**
- Commitment to evidence-based decision making

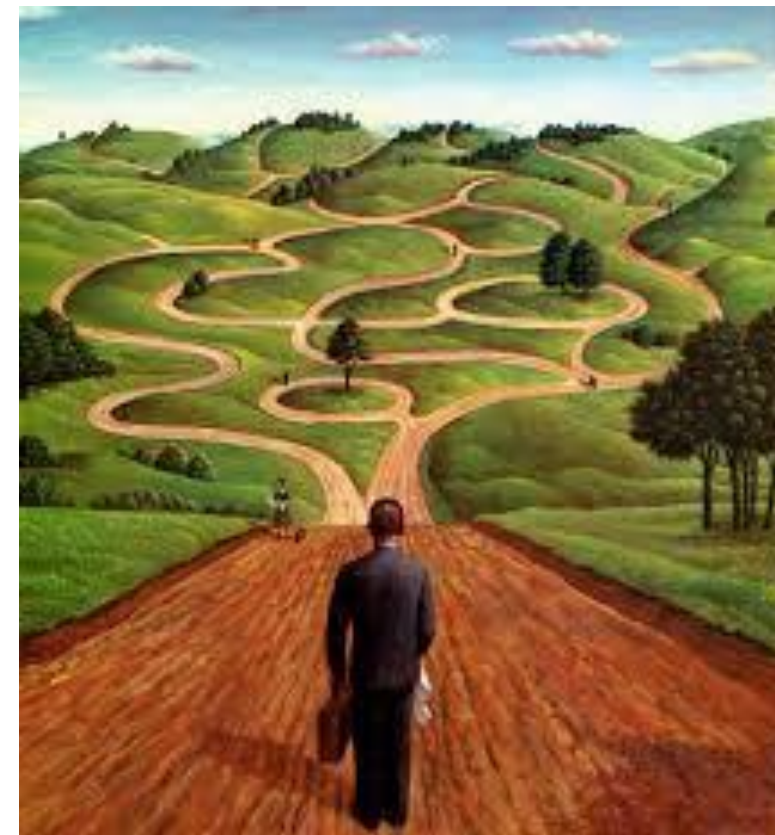
<https://www.dcyf.wa.gov/about/about-us>



Washington State Department of
CHILDREN, YOUTH & FAMILIES

The DCYF Journey to Open Data

- Decision that data governance sits outside of IT, situated within Office of Innovation, Alignment, & Accountability (OIAA)
 - Acquired responsibility for Open Data
- Began work on managing Early Learning data on the Socrata (open data) platform, data.wa.gov.
- Established our Open Data Plan in Q1 2022
- Began publishing dashboards for early learning with support from WA STEM, a statewide education advocacy group.
 - Utilized data.wa.gov to share the underlying data that supports the dashboards – created two-way links
 - Immediate use by communities, questions from local governments and community stakeholders
- Continued expansion of these dashboards into other agency topic areas (e.g. JR and Prevention work surrounding child welfare)
- Decisions made at the Director level based on business needs/requirements and commitments made on the Open Data Plan



Available Dashboards from DCYF Data

	Early Learning	Juvenile Rehabilitation	Prevention / Child Welfare
# of dashboards	5	1	2*
# of datasets	5	3	6
Update Frequency	QTR/Annual	Annual	Annual
Metadata Complete?	Yes	Yes	Yes

** Dependency dashboard built by the Washington State Center for Court Research (WSCCR), using a combination of DCYF (child welfare) and court data.*

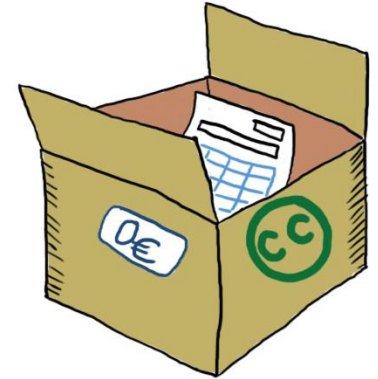
Transition to Online View

- Dashboards
 - Early Learning
 - Juvenile Rehabilitation
 - Prevention / Child Welfare
 - Dependency Dashboard (partnership w/WSSCR)
- General Approach
 - Links work in both directions, increases chances of discovery
 - Data.wa.gov to DCYF Dashboards
 - DCYF Dashboards to data.wa.gov
 - Utilize community feedback
 - Improvements, or
 - Increase sharing frequency
 - Small numbers – prevents potential re-identification
 - EL uses the 'less than 5' standard
 - CW/JR uses the 'less than 10' standard

PRINCIPLES OF OPEN DATA

1. PUBLIC
2. MACHINE READABLE
3. LICENSED
4. FREE OF CHARGE

https://hri.fi/en_gb/support/what-is-open-data/



Questions or Feedback?



Washington State Department of Social & Health Services
CHILDREN, YOUTH & FAMILIES

Thank you!

Contact
DCYF Data Governance

